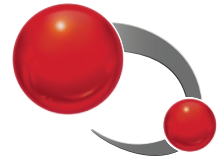


# Connected Components Workbench™ Software Quick Tips



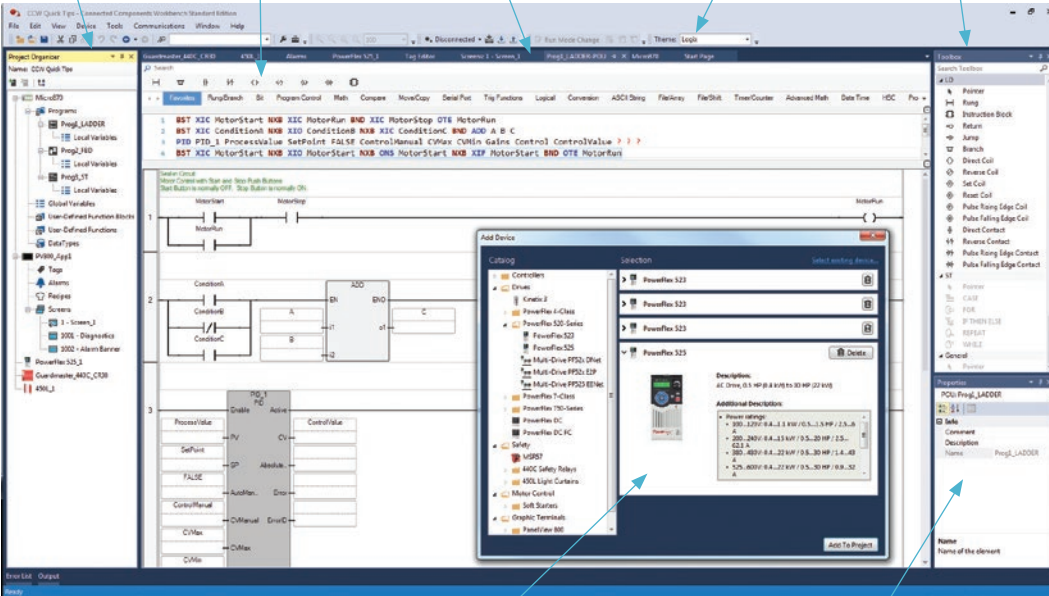
**Project Organizer**

**Instruction Toolbar**

**Central Workspace**

**Themes Toolbar**

**Instruction Toolbox**



**Status Bar**

**Add Device Selector**

**Workspace Properties**

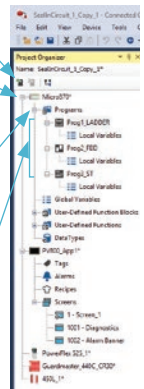
**Project Organizer**

Add Device Selector

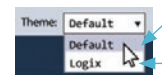
Right click & select Change Controller to switch between controller types

Right click to add new Structured Text/Ladder Diagram/Function Block Diagram

Drag and Drop programs to different positions in order to change the execution order



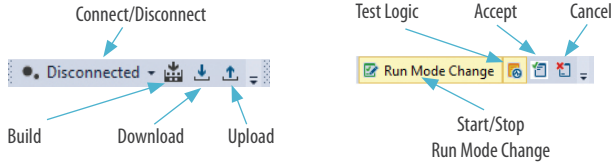
**Themes Toolbar**



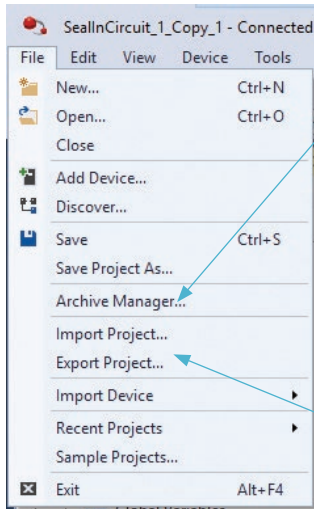
IEC Instruction Names

Logix Instruction Names

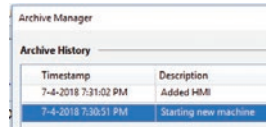
# Going Online



# Import/Export Project and Archive Manager



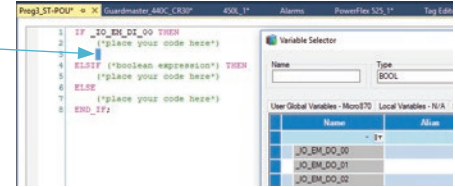
**Archive Manager**  
Create and delete archive  
*Requires Developer Edition*



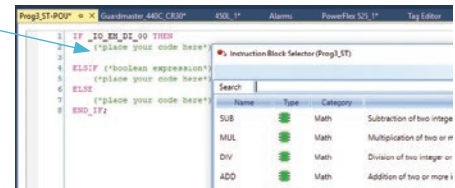
**Import/Export Project**  
Import or export the entire project including archives, as a CCWARC file type

# Structured Text Editor

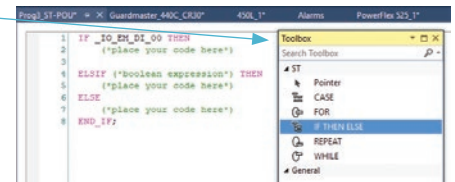
**Variable Selector**  
Ctrl-I brings up the Variable Selector, so you can select a variable instead of typing it



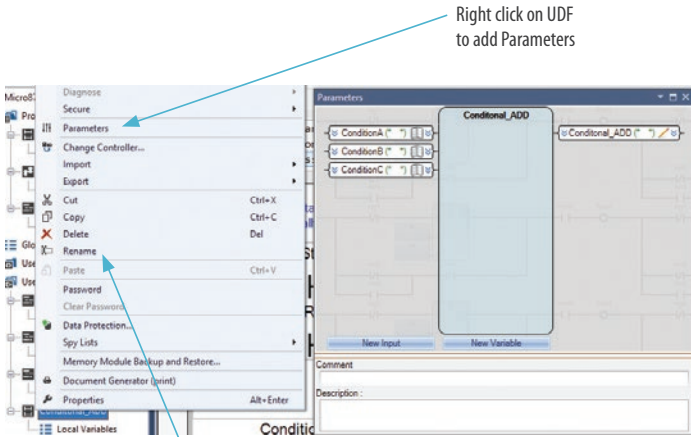
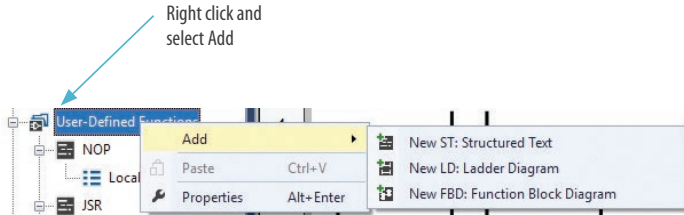
**Instruction Block Selector**  
Ctrl-R brings up the Block Selector



**Structured Text Editor Toolbox**  
Drag and Drop of language elements



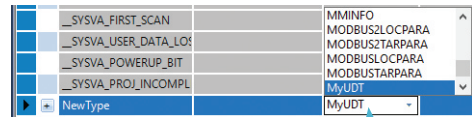
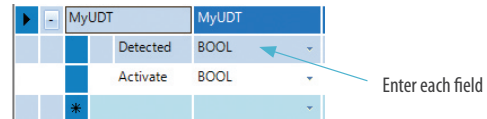
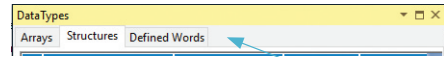
# User-defined Function (UDF) or User-defined Function Block (UDFB)



Right click on UDF to Rename

# User-defined Data Type (UDT)

Requires Developer Edition



New DataType will be available when a new variable is created

# Ladder Diagram

## Instruction Toolbar

Mouse over Instruction for description

Right click Instruction to Add or Remove from Favorites

Scroll tabs

Click to show list of all Instruction Groups

Hit **TAB** key after entering Instruction name to auto-complete Branch Start (BST) and to auto-create Instruction Block instance names

Click to hide or unhide Instruction Toolbar or ASCII Text Input Pane

## Zoom

Zoom In

Zoom Out

Zoom to Fit All

Zoom to Page Width

- If toolbars are not visible, right click on areas where toolbars are to enable toolbars. From there, enable Zoom
- Zoom is also available by holding down **Ctrl** and using mouse wheel

## Variables

Single click to select variables

Double click to declare new variable

## Branching

Drop Branch around Instruction

Drop Branch after Instruction

Whole Branch is selected

Single level of Branch selected

Only Instruction selected

## Keyboard Shortcuts

**Ctrl-R** enables/disables Variable Selector after Drag and Drop of Instructions

Status Bar

Manual-Input Enable

Auto-Input Enable

Select Instruction and hit **F1** to invoke context sensitive help

Select Contact or Coil and hit **SPACEBAR** to scroll through available types



Find out more at the  
Connected Components Workbench software page  
<http://www.rockwellautomation.com/go/lit/ccws>

Allen-Bradley, Connected Components Workbench, Micro800, Rockwell Automation and Rockwell Software are trademarks of Rockwell Automation. Trademarks not belonging to Rockwell Automation are property of their respective companies.

Publication 9328-SP002B-EN-P - October 2018  
Supersedes Publication 9328-SP002A-EN-P - October 2017

# Rockwell Automation

Allen-Bradley • Rockwell Software

Copyright © 2018 Rockwell Automation, Inc. All Rights Reserved. Printed in USA.