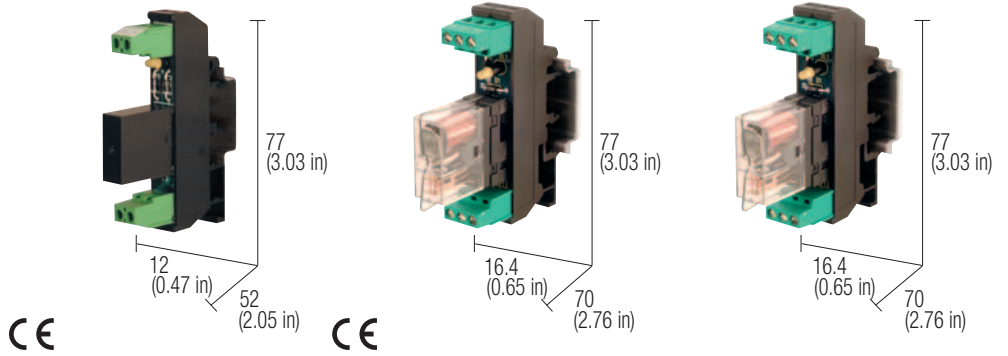


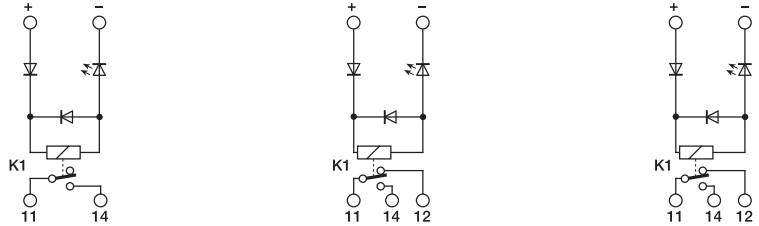
24 Vdc SPDT single relay R series



NOTES

- (1) Relay model is not binding, they may be modified without prior warning. The technical data shown here is to be considered typical
- (2) Version available upon request

BLOCK DIAGRAM



VERSIONS

Pluggable relay
Fixed relay

Cat. No. XRFA024D

Cat. No. XR_1824D

Cat. No. XR_1024D

—
RFA024D

RE1824D
RF1824D

RE1024D
RF1024D

INPUT TECHNICAL DATA

Rated voltage
Rated current (1 channel)
Turn ON time
Turn OFF time
Protection circuit

24 Vdc ± 10%

15 mA ± 10%

15 ms

5 ms

damping & polarity protection diode

24 Vdc ± 10%

22 mA ± 10%

15 ms

5 ms

damping & polarity protection diode

24 Vdc ± 10%

27 mA ± 10%

15 ms

5 ms

damping & polarity protection diode

OUTPUT TECHNICAL DATA

Type and number of contacts
Nominal current (resistive load)
Current breaking power
Current of the fuse max.

SPST(NO) AgSnO₂
5 A / 250 Vac

5 A

—

SPDT AgSnO₂
12 A / 250 Vac

12 A

—

SPDT AgSnO₂
16 A / 250 Vac

16 A

—

GENERAL TECHNICAL DATA

Operating temperature
Coil/contact isolation
Isolation between output terminals
Protection degree
Overvoltage category / pollution degree
Reference Standard
Status display
Connection terminals
Housing material
Approx. weight
Mounting information

−10...+50°C

2.5 kVac / 60 s

0,5 kVac / 60 s (between open contact)

IP 00 IEC529, EN60529

III / 2

IEC 664-1, DIN VDE 0110.1

green LED

2.5 mm² fixed screw type AWG26-14

UL94V-0 plastic material

30 g (1.07 oz)

vertical on rail adjacent without gap

−10...+50°C

2.5 kVac / 60 s

0,5 kVac / 60 s (between open contact)

IP 00 IEC529, EN60529

III / 2

IEC 664-1, DIN VDE 0110.1

green LED

2.5 mm² fixed screw type AWG26-14

UL94V-0 plastic material

44 g (1.55 oz)

vertical on rail adjacent without gap

−10...+50°C

2.5 kVac / 60 s

0,5 kVac / 60 s (between open contact)

IP 00 IEC529, EN60529

III / 2

IEC 664-1, DIN VDE 0110.1

green LED

2.5 mm² fixed screw type AWG26-14

UL94V-0 plastic material

44 g (1.55 oz)

vertical on rail adjacent without gap

MOUNTING ACCESSORIES

Mounting rail type according to IEC60715/TH35
Mounting rail type according to IEC60715/G32

PR/3/AC, PR/3/AC/ZB, PR/3/AS, PR/3/AS/ZB
PR/DIN/AC - PR/DIN/AS - PR/DIN/AL

Replacement relay
Screw type jumper

(1)
black

Cat. No. 8904000

—

Cat. No. 8904001

—

Cat. No. 8904058

—