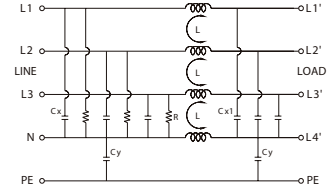
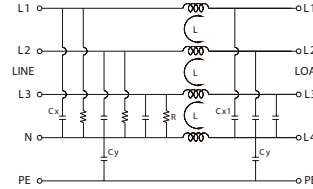
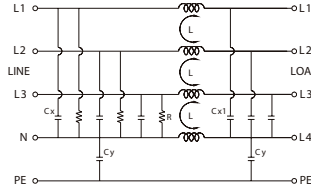


- Models from 36 to 100 A
- Elevated attenuation from 150 kHz to 30 MHz
- Elevated attenuation even on long cables

NOTE

(1) Produced on demand, contact our sales office for availability
 (2) Isolation test need to be made in DC voltage, according to EN 60950, cause by the internal filter capacitors.



CODE TYPE	XF36TYT8	XF50TYT8	XF100TYT8
GENERAL TECHNICAL DATA	F36TYT8 (1)	F50TYT8 (1)	F100TYT8 (1)
Rated voltage	440 Vac ± 10%	440 Vac ± 10%	440 Vac ± 10%
Rated current	36 A	50 A	100 A
Leakage current	3 mA	3 mA	1.3 mA
Frequency	50...60 Hz	50...60 Hz	50...60 Hz
Operating temperature range	-25...+85°C	-25...+85°C	-25...+85°C
Isolation L/L	1.45 kVdc / 60 s [2]	1.45 kVdc / 60 s [2]	1.45 kVdc / 60 s [2]
Isolation L/PE	2.25 kVdc / 60 s [2]	2.25 kVdc / 60 s [2]	2.25 kVdc / 60 s [2]
Overvoltage category / Pollution degree	—	—	—
Protection degree	IP 20	IP 20	IP 20
Connection terminal IN/OUT	fixed screw terminal blocks	fixed screw terminal blocks	fixed screw terminal blocks
Housing material	metallic	metallic	metallic
Dimension	107x191.5x82 mm	124x194x104 mm	162x252x132 mm
Approximate weight	—	—	—
Mounting information	screw fixing, on metal panel	screw fixing, on metal panel	screw fixing, on metal panel
APPROVALS			
Common mode (L/PE) attenuation (dB)			
0.15 MHz	25	25	10
0.5 MHz	50	45	20
1 MHz	50	45	25
5 MHz	50	40	30
10 MHz	40	40	30
30 MHz	25	25	20
Differential mode (L/PE) attenuation (dB)			
0.15 MHz	30	30	30
0.5 MHz	50	50	40
1 MHz	55	50	40
5 MHz	50	40	35
10 MHz	40	40	35
30 MHz	30	30	25
ACCESSORIES			
Marking tag	—	—	—