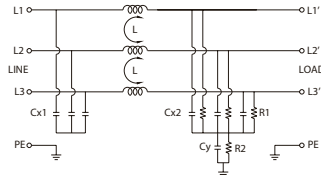



- Models from 7 to 130 A
- Elevated attenuation from 150 kHz to 30 MHz
- Elevated attenuation even on long cables
- Compact dimension



**NOTE**

(1) Isolation test need to be made in DC voltage, according to EN 60950, cause by the internal filter capacitors



CODE	XF100TDVST2
TYPE	F100TDVST2
GENERAL TECHNICAL DATA	
Rated voltage	480 Vac $\pm$ 10%
Rated current	100 A
Leakage current	30 mA
Frequency	50...60 Hz
Operating temperature range	-25...+85°C
Isolation L/L	1.45 kVdc / 60 s (1)
Isolation L/PE	2.25 kVdc / 60 s (1)
Overvoltage category / Pollution degree	—
Protection degree	IP 20
Connection terminal IN/OUT	fixed screw terminal blocks
Housing material	metallic
Dimension	90x270x150 mm
Approximate weight	—
Mounting information	screw fixing, on metal panel
APPROVALS	
	
Common mode (L/PE) attenuation (dB)	
0.15 MHz	35
0.5 MHz	50
1 MHz	45
5 MHz	25
10 MHz	15
30 MHz	7
Differential mode (L/PE) attenuation (dB)	
0.15 MHz	30
0.5 MHz	35
1 MHz	35
5 MHz	35
10 MHz	30
30 MHz	7
ACCESSORIES	
Marking tag	—