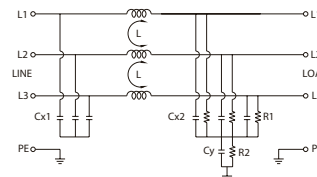
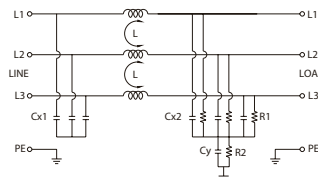
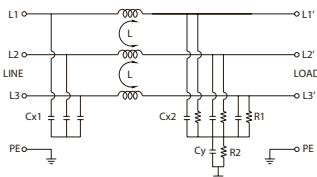


- Models from 7 to 130 A
- Elevated attenuation from 150 kHz to 30 MHz
- Elevated attenuation even on long cables
- Compact dimension



**NOTE**

[1] Isolation test need to be made in DC voltage, according to EN 60950, cause by the internal filter capacitors



CODE	XF07TDVST2	XF16TDVST2	XF30TDVST2
<b>GENERAL TECHNICAL DATA</b>			
Rated voltage	480 Vac ± 10%	480 Vac ± 10%	480 Vac ± 10%
Rated current	7 A	16 A	30 A
Leakage current	30 mA	30 mA	30 mA
Frequency	50...60 Hz	50...60 Hz	50...60 Hz
Operating temperature range	-25...+85°C	-25...+85°C	-25...+85°C
Isolation L/L	1.45 kVdc / 60 s [1]	1.45 kVdc / 60 s [1]	1.45 kVdc / 60 s [1]
Isolation L/PE	2.25 kVdc / 60 s [1]	2.25 kVdc / 60 s [1]	2.25 kVdc / 60 s [1]
Overvoltage category / Pollution degree	—	—	—
Protection degree	IP 20	IP 20	IP 20
Connection terminal IN/OUT	fixed screw terminal blocks	fixed screw terminal blocks	fixed screw terminal blocks
Housing material	metallic	metallic	metallic
Dimension	42x192x72 mm	47x252x72 mm	52x272x87 mm
Approximate weight	—	—	—
Mounting information	screw fixing, on metal panel	screw fixing, on metal panel	screw fixing, on metal panel
<b>APPROVALS</b>			
<b>Common mode (L/PE) attenuation (dB)</b>			
0.15 MHz	20	15	15
0.5 MHz	60	50	50
1 MHz	60	55	55
5 MHz	60	60	60
10 MHz	50	50	50
30 MHz	35	35	35
<b>Differential mode (L/PE) attenuation (dB)</b>			
0.15 MHz	25	25	25
0.5 MHz	60	55	55
1 MHz	65	60	60
5 MHz	60	60	60
10 MHz	55	55	55
30 MHz	40	40	40
<b>ACCESSORIES</b>			
Marking tag	—	—	—