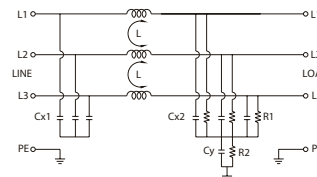
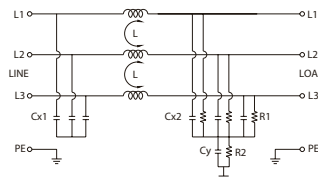
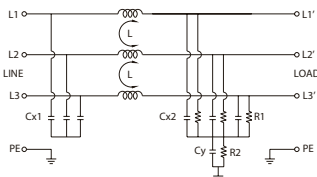


- Models from 7 to 130 A
- Elevated attenuation from 150 kHz to 30 MHz
- Elevated attenuation even on long cables
- Compact dimension



NOTE

[1] Isolation test need to be made in DC voltage, according to EN 60950, cause by the internal filter capacitors



CODE TYPE	F42TDVST2	XF42TDVST2	F55TDVST2	XF55TDVST2	F75TDVST2	XF75TDVST2
GENERAL TECHNICAL DATA						
Rated voltage	480 Vac ± 10%		480 Vac ± 10%		480 Vac ± 10%	
Rated current	42 A		55 A		75 A	
Leakage current	30 mA		30 mA		30 mA	
Frequency	50...60 Hz		50...60 Hz		50...60 Hz	
Operating temperature range	-25...+85°C		-25...+85°C		-25...+85°C	
Isolation L/L	1.45 kVdc / 60 s [1]		1.45 kVdc / 60 s [1]		1.45 kVdc / 60 s [1]	
Isolation L/PE	2.25 kVdc / 60 s [1]		2.25 kVdc / 60 s [1]		2.25 kVdc / 60 s [1]	
Overvoltage category / Pollution degree	—		—		—	
Protection degree	IP 20		IP 20		IP 20	
Connection terminal IN/OUT	fixed screw terminal blocks		fixed screw terminal blocks		fixed screw terminal blocks	
Housing material	metallic		metallic		metallic	
Dimension	52x312x87 mm		87x252x92 mm		92x272x137 mm	
Approximate weight	—		—		—	
Mounting information	screw fixing, on metal panel		screw fixing, on metal panel		screw fixing, on metal panel	
APPROVALS						
Common mode (L/PE) attenuation (dB)						
0.15 MHz	55		15		15	
0.5 MHz	70		55		55	
1 MHz	70		55		55	
5 MHz	45		55		55	
10 MHz	35		50		50	
30 MHz	20		35		30	
Differential mode (L/PE) attenuation (dB)						
0.15 MHz	45		25		20	
0.5 MHz	45		55		50	
1 MHz	45		60		50	
5 MHz	45		60		50	
10 MHz	45		50		55	
30 MHz	30		40		40	
ACCESSORIES						
Marking tag	—		—		—	