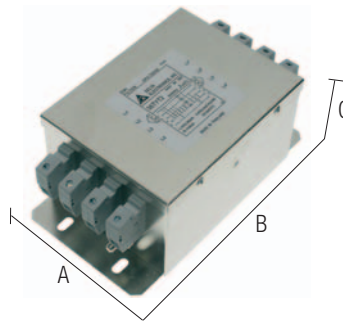


# 3-phase filter with neutral serie TYT

- Models from 16 to 100 A
- High attenuation from 150 kHz to 30 MHz
- High attenuation also with long cables

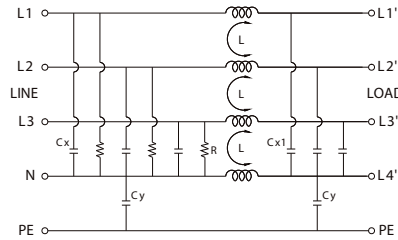


## NOTES

Dimensions and diagrams are indicative, for more details see the products data sheet.

- (1) According to EN60950 insulation tests on input side must be made only with DC instruments.  
 (2) Version non exploitée à l'entrepôt mais réalisée sur demande, contacter nos bureaux commerciaux pour disponibilité.

## BLOCK DIAGRAM



## VERSIONS

Rated current	Type	Cat. No.
16 A	<b>F 16 TYT2</b>	XF16TYT2
25 A	<b>F 25 TYT2</b>	XF25TYT2
36 A	<b>F 36 TYT2</b>	XF36TYT2 (2)
50 A	<b>F 50 TYT2</b>	XF50TYT2 (2)
100 A	<b>F 100 TYT2</b>	XF100TYT2 (2)

## Dimensions

A	B	C	Weight (kg)
107 (4,22 in)	191,5 (7,55 in)	82 (3,23 in)	
107 (4,22 in)	191,5 (7,55 in)	82 (3,23 in)	
107 (4,22 in)	191,5 (7,55 in)	82 (3,23 in)	
124 (4,89 in)	194 (7,64 in)	104 (4,1 in)	
162 (6,38 in)	252 (9,93 in)	132 (5,2 in)	

## GENERAL TECHNICAL DATA

Rated voltage	440 Vac $\pm$ 10%
Rated current	see versions table
Frequency	50...60Hz
Leakage current at 480 Vac 60 Hz	3 mA
Operating temperature range	-25...+85°C
Insulation line/line	1.45 KVdc / 60 s (1)
Insulation line/PE	2.25 KVdc / 60 s (1)
Overvoltage category/Pollution degree	—
Protection degree	IP 20 IEC 529, EN60529
Connection terminal	screw terminals
Housing material	metal
Approx. weight	see versions table
Mounting information	on the panel with screws

Type	Common mode (L / PE) attenuation (dB)						Differential mode (L / L) attenuation (dB)					
	0.15 MHz	0.5 MHz	1 MHz	5 MHz	10 MHz	30 MHz	0.15 MHz	0.5 MHz	1 MHz	5 MHz	10 MHz	30 MHz
<b>F 16 TYT2</b>	25	50	50	50	45	30	35	55	60	60	40	30
<b>F 25 TYT2</b>	25	50	50	50	45	30	35	55	60	60	40	30
<b>F 36 TYT2</b>	25	50	50	50	40	25	30	50	55	50	40	30
<b>F 50 TYT2</b>	25	45	45	40	40	25	30	50	50	40	40	30
<b>F 100 TYT2</b>	10	20	25	30	30	20	30	40	40	35	35	25