

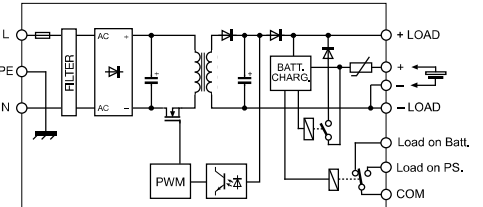
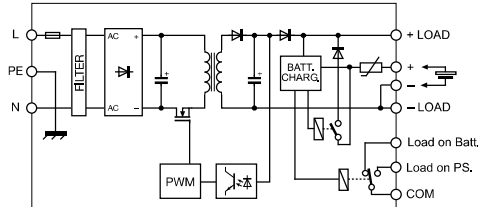
- Power supply with integrated battery charger
- Suitable for Lead-Acid batteries
- Supplies power to load and battery simultaneously
- Battery deep discharge protection
- LED status indicator and alarm contact



NOTE

Please refer to the datasheet or operating instruction for more details

In order to complete the charge, the DC output of the power supply must be 2-3V more than nominal voltage of the battery



CODE TYPE	CSC120B	CSC120C
INPUT TECHNICAL DATA		
Input rated voltage	120–230 Vac	120–230 Vac
Input voltage AC	90...264 Vac	90...264 Vac
Input voltage DC	100...345 Vdc [derating U _{in} <130 Vdc]	100...345 Vdc [derating U _{in} <130 Vdc]
Frequency	47...63 Hz	47...63 Hz
Current consumption	1.6 A (120 Vac) / 0.91 A (230 Vac)	1.9 A (120 Vac) / 1.1 A (230 Vac)
Inrush peak current	20 A	20 A
Power factor	> 0.65	> 0.65
Internal protection fuse	T 3.15 A	T 3.15 A
External protection on AC line	MCB: C-4 A / Fuse: T 4 A	MCB: C-4 A / Fuse: T 4 A
OUTPUT TECHNICAL DATA		
Output rated voltage	12 Vdc ±1%	24 Vdc ±1%
Output voltage range	13...15 Vdc normal operation, 9...15 Vdc battery operation	26...26 Vdc normal operation, 17...25 Vdc battery operation
Continuous current	5 A at 50°C	5 A at 50°C
Battery safety fuse	???	???
Status indication	LED "DC OK" / LED "Alarm"	LED "DC OK" / LED "Alarm"
Alarm contact	dry contact, max. 1A @ 24 Vdc (U _{in} >21.6 Vdc)	dry contact, max. 1A @ 24 Vdc (U _{in} >10.8 Vdc)
Battery type	Lead-Acid	Lead-Acid
Battery capacity	max. 1.2 Ah (24 Vdc)	max. 1.2 Ah (24 Vdc)
Charging current	150 mA	150 mA
Battery disconnection voltage	≤ 9 Vdc ±0.5V	≤ 18 Vdc ±0.5V
Protections	short-circuit / battery overload	reverse polarity, short-circuit, battery overload, battery deep discharge
GENERAL TECHNICAL DATA		
Efficiency	81% (120 Vac) 83% (230 Vac)	84% (120 Vac) 86% (230 Vac)
Dissipated power	25 W (120 Vac) 22 W (230 Vac)	22 W (120 Vac) 19 W (230 Vac)
Operating temperature range	-20...+60°C [derating -2 W >45°C]	-20...+60°C [derating -3.2 W >45°C]
Input / output isolation	3 kVac / 60 s (SELV output)	3 kVac / 60 s (SELV output)
Input / ground isolation	1.5 kVac / 60 s	1.5 kVac / 60 s
Output / ground isolation	0.5 kVac / 60 s	0.5 kVac / 60 s
Standard / approvals	EN 60950-1	EN 60950-1
EMC Standards	EN 61000-6-1, EN 61000-6-2, EN 61000-6-3, EN 61000-6-4	EN 61000-6-1, EN 61000-6-2, EN 61000-6-3, EN 61000-6-4
Overvoltage category / Pollution degree	II / 2	II / 2
Protection degree	IP 20	IP 20
Connection terminal IN/OUT	2.5 mm ² / 2.5 mm ²	2.5 mm ² / 2.5 mm ²
Housing material	aluminium	aluminium
Dimension	40x130x115 mm	40x130x115 mm
Approximate weight	450 g	450 g
Mounting information	vertical on a rail, 10 mm from adjacent components	vertical on a rail, 10 mm from adjacent components
APPROVALS		
ACCESSORIES		
Mounting rail (IEC60715/TH35-7.5)	PR/3/AC, PR/3/AC/ZB, PR/3/AS, PR/3/AS/ZB	PR/3/AC, PR/3/AC/ZB, PR/3/AS, PR/3/AS/ZB
Mounting rail (IEC60715/TH35-15)	PR/3/PP, PR/3/PP/ZB, PR/3/PA, PR/3/PA/ZB	PR/3/PP, PR/3/PP/ZB, PR/3/PA, PR/3/PA/ZB
Marking tag		