

# Connected Components Workbench software

Design and configuration software

## Overview

Experience digital engineering and simplify standalone machine development for multiple industries with Connected Components Workbench™ software and the built-in Micro800™ Simulator.

As part of the Integrated Architecture® system from Rockwell Automation, Connected Components Workbench software provides device configuration, controller programming and integration with Human Machine Interface (HMI) editor while reducing initial machine development time and cost. The software also provides flexibility to switch the programming environment between the default IEC and Logix Themes. This is available in both Standard and Developer editions.

## Advantages

- Reduce development time with one software to configure multiple devices for standalone machines
- Connect to devices with ease through various serial and network options
- Simplify programming process with sample code, user-defined functions (UDFs) and user-defined function blocks (UDFBs)
- Scale controllers and applications with converter tool and copy/paste feature

**Configure**

**Program**

**Visualize**

## Latest release for Connected Components Workbench software

- Shorten Micro800™ controller programming time by entering and modifying ladder rungs quickly using similar workflows as RSLogix 500® and Studio 5000 Logix Designer® software
- Improve search functionality with the intuitive Find feature
- Share code between Connected Components Workbench™ and Studio 5000 Logix Designer software using copy and paste
- Experience the familiar Controller Organizer view through the Logix Theme
- Design and debug application code in a controlled environment using Micro800 Simulator
- Increase programming efficiency with the Global and Local variable data grid
- Improve productivity with the enhanced runtime performance and Run Mode Change (RMC) capabilities

## Easy to program

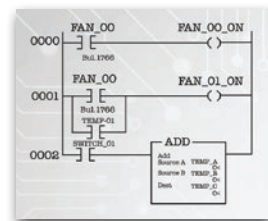
- Program Micro800 controllers using Ladder Diagram (LD), Function Block Diagram (FBD) and Structured Text (ST) editors that support symbolic addressing
- Easily switch the programming environment between IEC and Logix Themes
- Simplify Pulse Train Output (PTO) axis programming with standard PLCopen® motion instructions



- Benefit through sample code from Rockwell Automation and partners via user-defined functions (UDFs) and user-defined function blocks (UDFBs)
- Reduce programming time with Filter and Quick Declaration features in the Global and Local variable data grid
- Gain faster and improved online edit experience with the refined Run Mode Change (RMC)

## Scalability and reusability at-a-glance

RSLogix™ 500  
Software



MicroLogix™  
controllers

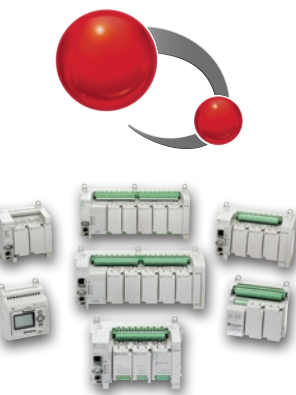


OR



Converter  
tool

Connected  
Components  
Workbench™  
Software



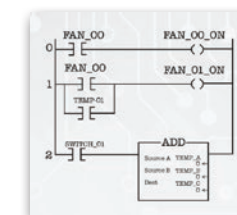
Micro800™  
controllers



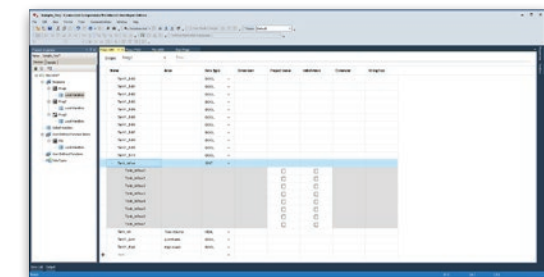
Copy/Paste

FactoryTalk  
by ROCKWELL AUTOMATION

Studio 5000®



CompactLogix™ 5370  
controller

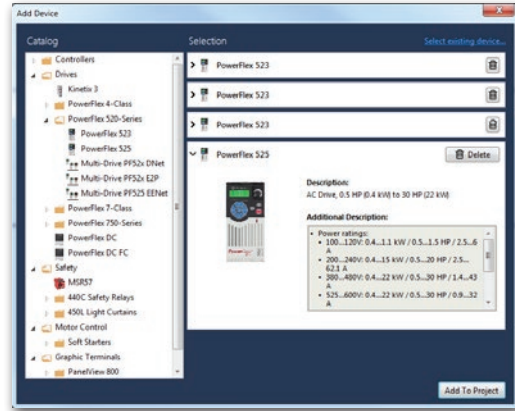




## Minimize startup time with Connected Components Workbench software

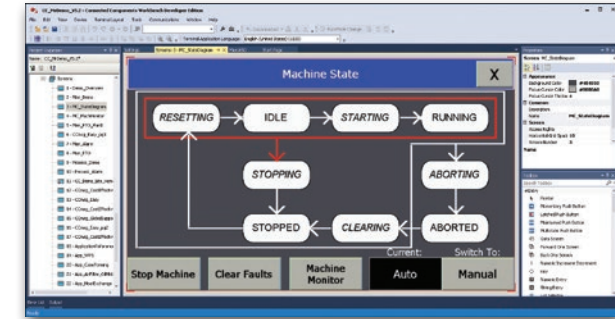
### Easy to configure

- Program efficiently with the familiar IEC and Logix Theme environment
- Leverage on wizards to guide through the configuration of PowerFlex® drives
- Connect to devices using USB, EtherNet/IP™ and Serial communications
- Configure safety relays using built-in function blocks instead of wiring (Guardmaster® 440C-CR30 software configurable safety relay)
- Update device firmware from project organizer without ControlFLASH™ software



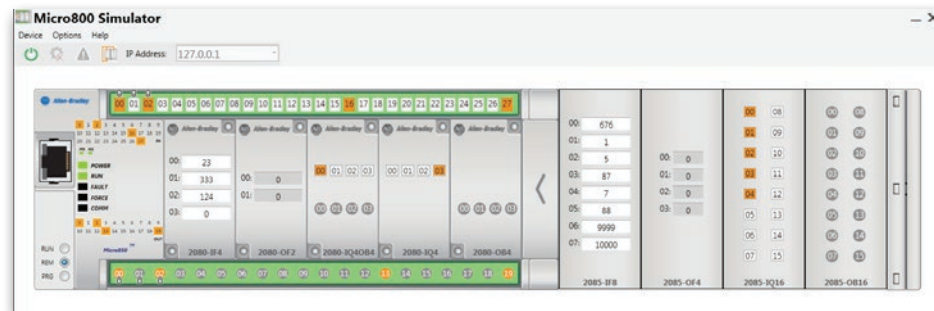
### Easy to visualize

- Integrate PanelView™ 800 graphic terminal application development with Micro800™ controller in single project
- Save time by referencing Micro800 controller variable names to HMI tags directly
- Map PanelView 800 tags to Micro800 controllers and CompactLogix™ 5370 controllers (L5X file) using Import function
- Perform simple object animation by using tags to determine the size and location on the screen



### Experience digital engineering and program without hardware

Develop and test application code in a controlled environment using Micro800 Simulator



### Supports the following devices including safety

- Micro800 controllers
- PanelView 800 graphic terminals
- PowerFlex drives
- SMC™ soft starters
- Kinetix® servo drives
- E200™ electronic overload relays
- Guardmaster 440C-CR30 software configurable safety relay
- Guardmaster speed monitoring safety relays
- GuardShield™ 450L safety light curtains

## Hardware requirements

To use Connected Components Workbench™ software effectively, your personal computer must meet the following hardware requirements:

	Minimum requirements
Processor	Intel Core i5 Standard Power processor (i5-3xxx) or equivalent
RAM memory	8 GB
Hard disk space	20 GB free
Optical drive	DVD-ROM (only required if software is installed from DVD)
Pointing device	Any Microsoft Windows® compatible pointing device

## Software requirements

The latest release supports the following operating systems, versions and service packs:

Supported operating system	Tested editions
Windows 10*	32 bit and 64 bit
Windows Server 2016*	64 bit
Windows 8.1*	32 bit and 64 bit
Windows Server 2012 R2*	64 bit
Windows Server 2012*	64 bit
Windows 7 SP1	32 bit and 64 bit
Windows Server 2008 R2 SP1	64 bit

\* Requires .NET Framework 3.5 SP1 to be installed.

### How to experience

Schedule a virtual demonstration with your local authorized distributor or Rockwell Automation sales representative and experience digital engineering live.

### Standard edition





Common, easy-to-use configuration and programming tool for a Rockwell Automation® Micro Control System. Includes a 10-minute runtime demo version of Micro800™ Simulator.

### Developer edition

Standard plus additional features including full version of Micro800 Simulator and Archive Manager, and extensive Micro800 controller programming capabilities for an enhanced user experience.

### How to obtain

- Standard edition
  - Free download through [rok.auto/ccw](http://rok.auto/ccw)
- Developer edition
  - Purchase an annual subscription which is bundled with support through the [Software Subscription Portal](#)
  - Or contact your [local distributor](#) or [Rockwell Automation Sales](#) for pricing

Connect with us.    

[rockwellautomation.com](http://rockwellautomation.com)

expanding **human possibility**®

AMERICAS: Rockwell Automation, 1201 South Second Street, Milwaukee, WI 53204-2496 USA, Tel: (1) 414.382.2000, Fax: (1) 414.382.4444

EUROPE/MIDDLE EAST/AFRICA: Rockwell Automation NV, Pegasus Park, De Kleetlaan 12a, 1831 Diegem, Belgium, Tel: (32) 2 663 0600, Fax: (32) 2 663 0640

ASIA PACIFIC: Rockwell Automation, Level 14, Core F, Cyberport 3, 100 Cyberport Road, Hong Kong, Tel: (852) 2887 4788, Fax: (852) 2508 1846

Allen-Bradley, CompactLogix, Connected Components Workbench, ControlFLASH, E200, expanding human possibility, FactoryTalk, Guardmaster, GuardShield, Integrated Architecture, Kinetix, Micro800, MicroLogix, PanelView, PowerFlex, Rockwell Automation, RSLogix 500, SMC, Studio 5000 Logix Designer and TechConnect are trademarks of Rockwell Automation, Inc. EtherNet/IP is a trademark of ODVA, Inc. Microsoft Windows, Windows and Windows Server are trademarks of Microsoft Corporation. PLCopen is a trademark by the association PLCopen. Trademarks not belonging to Rockwell Automation are property of their respective companies.