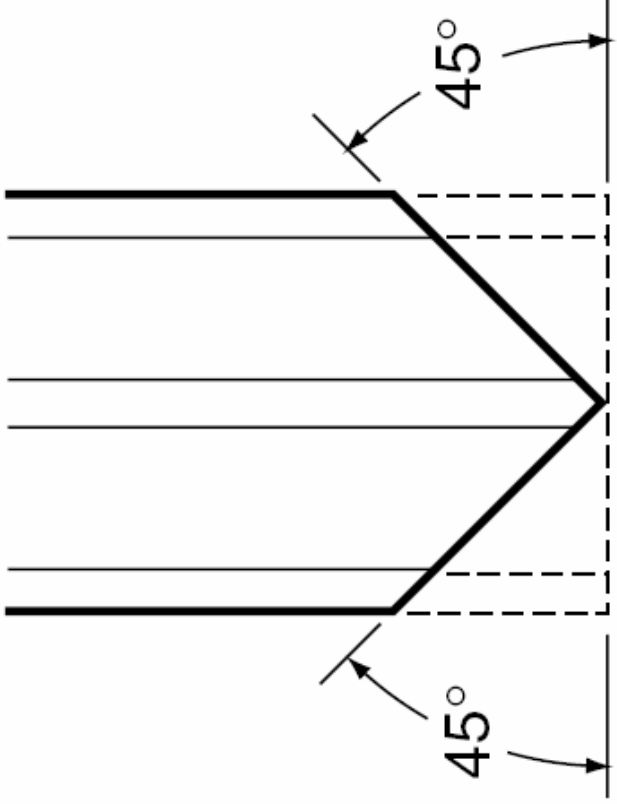


# MatGuard System

Uniting Trim Fixing

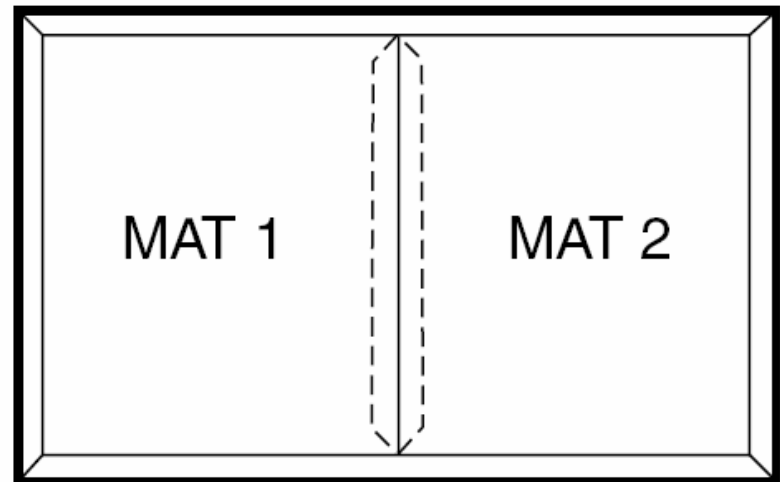
# Uniting Trim Fixing

- All active uniting trim sections used in installation must be mitred to 45 degrees. This aids in installation and helps retain overall sensitivity of the sensing area.

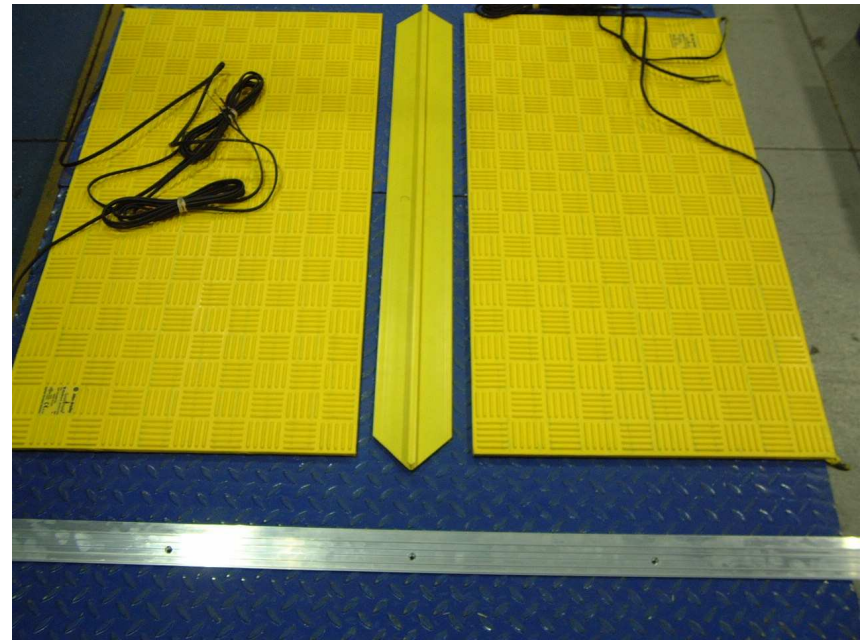


MITRE ALL TRIMS TO 45°

- Sample MatGuard System comprising two Safety Mats, Perimeter and Active Uniting Trims.

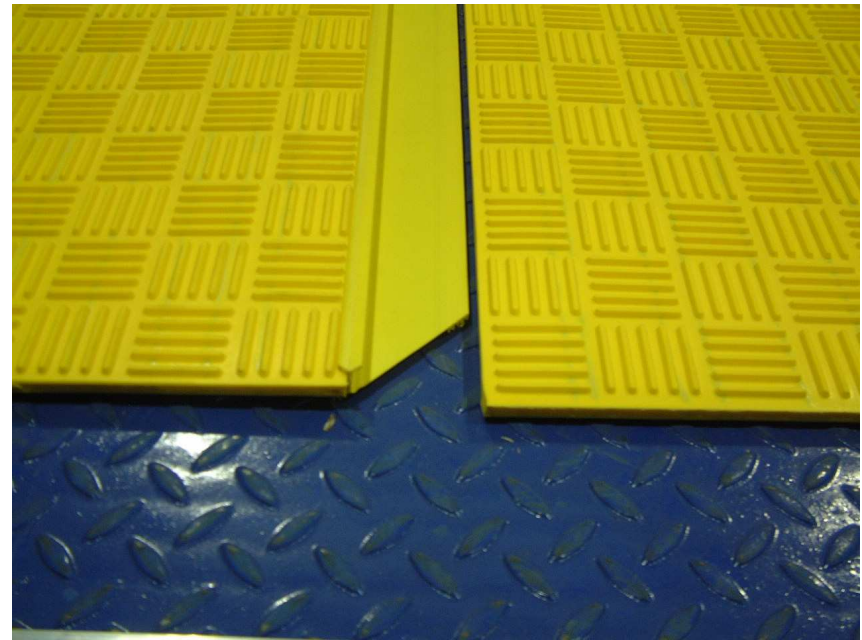


- For a MatGuard System with two mats the Active Uniting Trim must be mitred to 45 degrees at each end where it meets the Perimeter Trim.





- The feet on the Active Uniting Trim will stop approximately 50mm from the edge of the Safety Mat, allowing flexibility at the mat edge where it goes underneath the Perimeter Trim.

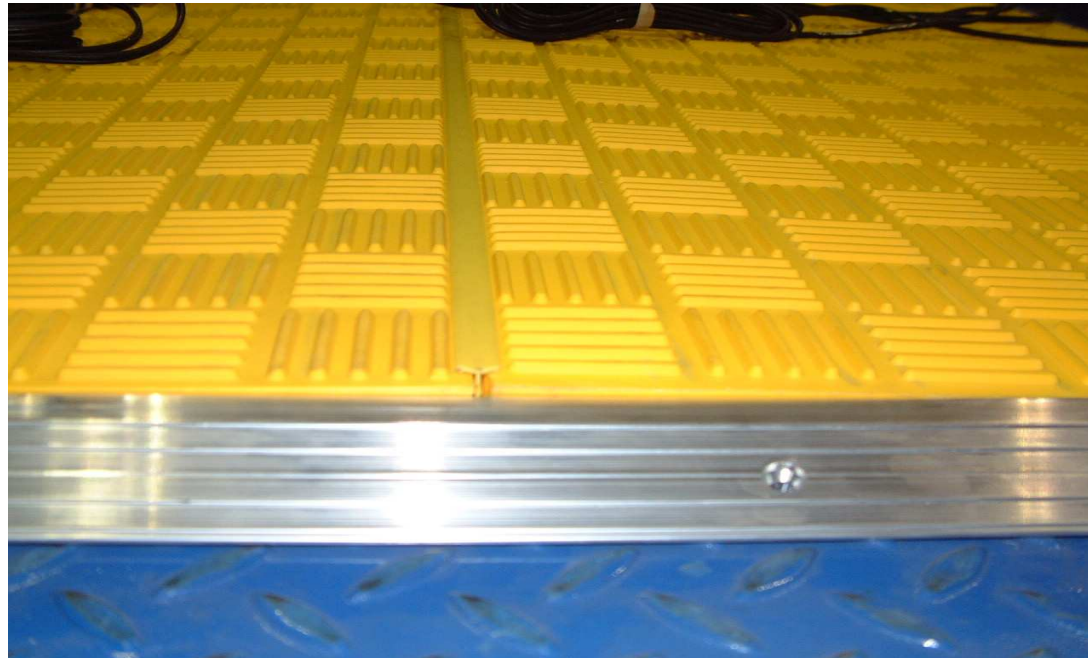








- The surface of the Safety Mat will be bowed up slightly as a result of the Active Uniting Trim sitting beneath it.



- The 45 degree mitre at the end of the Active Uniting Strip increases the flexibility at the joint allowing the mat to be easily pressed down and slid underneath the Perimeter Trim which will sit with its support legs flush to the floor. The 45 degree mitre ensures that the mat is not clamped too tightly at this point.



- If the Active Uniting Trim is not Mitred to 45 degrees where it meets the Perimeter Trim, it can result in issues such as nuisance tripping and intermittent reset of the Safety Mat System when the Perimeter Trim is fastened down.

If the mat is clamped too tightly between the two trims, the internal plates will be pressed closer together than is normal. When someone stands on the mat near the edge the plates will make contact but may not reopen consistently because of the clamping effect off the two trims.

When someone then steps on the other end of the mat it is may cause the plates to open allowing the system to reset.

- The floor or mounting surface that the mats are going onto must be flat, smooth and rigid i.e. shows no perceptible distortion under the heaviest load anticipated. Undulations, protrusions, large gaps or other irregularities will increase the sensitivity of the mats and may result in intermittent nuisance tripping of the system.