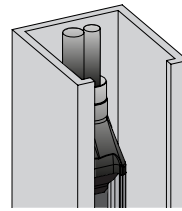
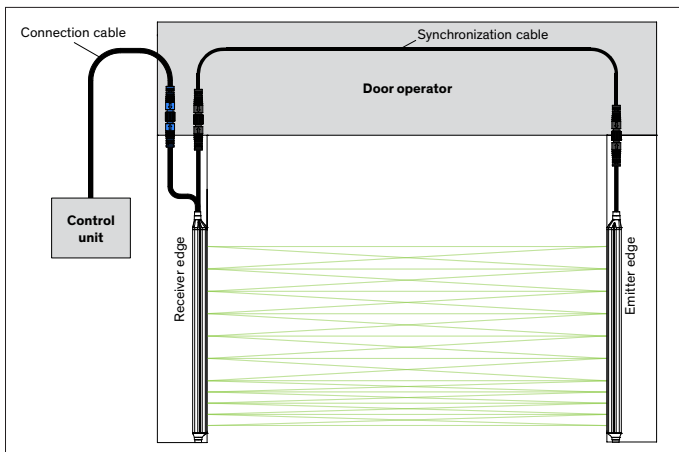
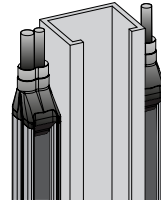


Overview



GridScan/Pro SI – blanking mode



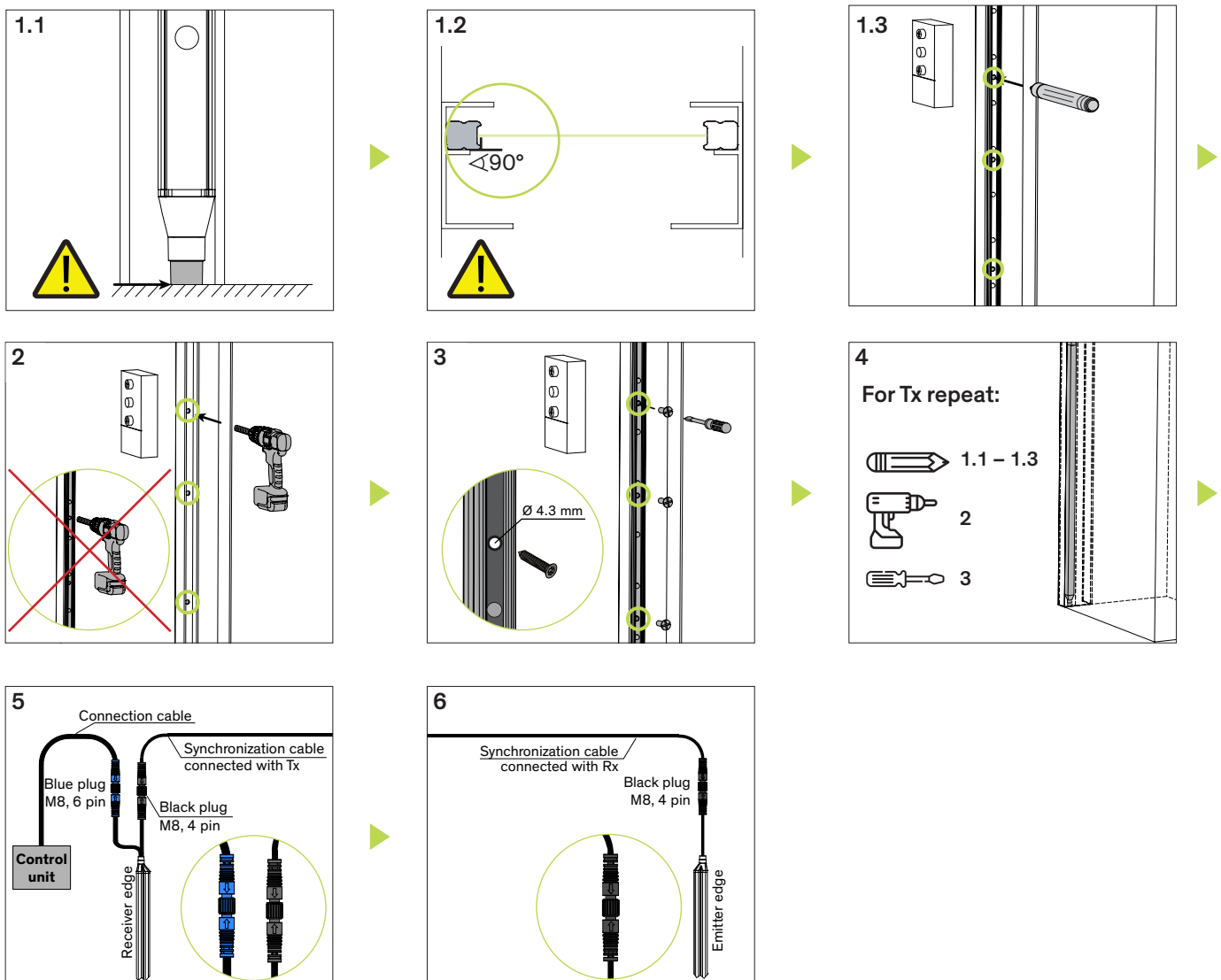
GridScan/Pro SI – static mode

Installation on door

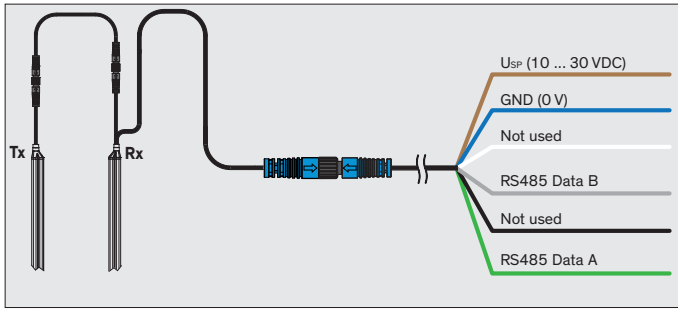


Important:

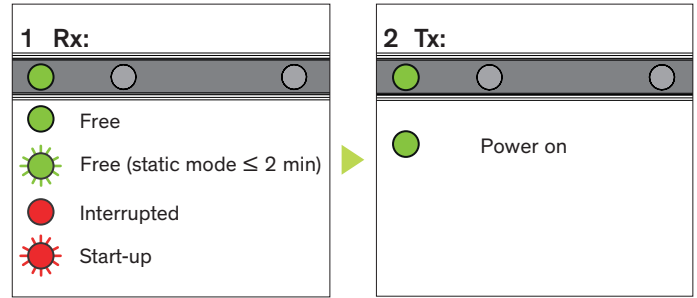
- ▶ Switch off main power and mark door „Out of service“.
- ▶ Mount the receiver edge into the guiding rail next to the door control unit.



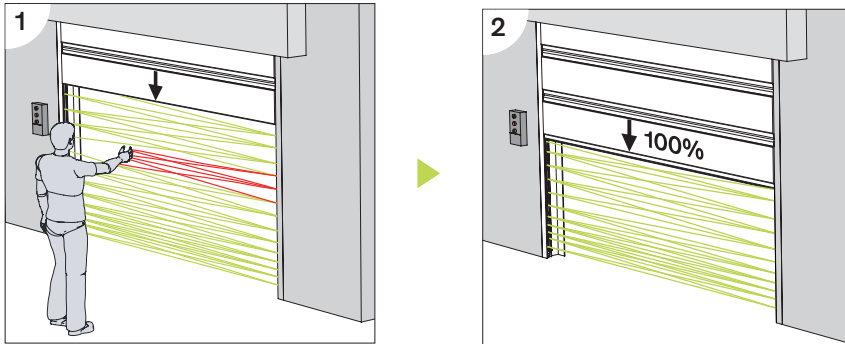
Electrical connection



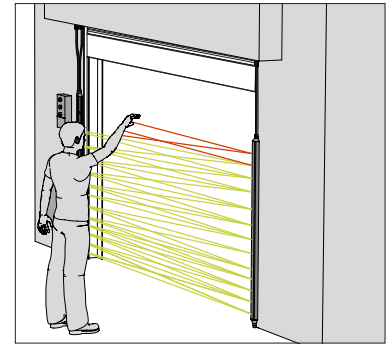
LED description



Testing - blanking and static mode



Testing - static mode



Important:

- ▶ The implementation of the light curtain needs to follow the description of the manual of the door control unit.
- ▶ Die Implementierung des Lichtvorhangs muss gemäss der entsprechenden Beschreibung in der Anleitung der Torsteuerung erfolgen.
- ▶ La mise en place du rideau lumineux doit suivre la description dans le manuel de la commande de porte.
- ▶ La implementación de la cortina fotoeléctrica debe seguir la descripción del manual del controlador de la puerta.
- ▶ L'installazione delle fotocellule deve seguire quanto descritto nel manuale della centralina della porta.
- ▶ 对光幕的操作需要遵循门控制器的说明书。
- ▶ ライトカーテンを設置する際には、ドア制御装置のマニュアルの記載に従う必要があります。



Manual



Product information
and movie

www.cedes.com

Complete Installation and Operation Manual and further information

CEDES AG, Science Park | CH-7302 Landquart
Phone: +41 81 307 2323
info@cedes.com | www.cedes.com

CEDES