

GridScan/Mini

Accessories

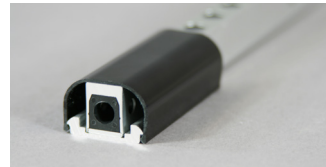
MOUNTING KITS



SHIPPING KIT

Part No.	Part Name
114 718	Shipping kit GRS/Mini 90°

Dimensions (l × h × d) 19 × 14 × 14 mm
Material Aluminum, 2 mm



MOUNTING KIT - VISION SHIELD

Part No.	Part Name
102 423	Mounting kit vision shield, 2100-19
102 424	Mounting kit vision shield, 3000-19 (3,048 mm)

Dimensions (w × h) 26.4 × 18.5 mm
Material
- Cover PVC
- Mounting plate Aluminum

CABLES



CONNECTION CABLE

Part No.	Part Name
111 820	Connection cable, 5 m, 6-pin
109 941	Connection cable, 3 m, M8 female, blue, 6-pin

Diameter Ø 4.2 mm
Material PVC
Open wires AWG26, 6 pcs.
Plug M8, 6-pin, blue



EXTENSION CABLE (EXTENTION FOR THE CONNECTION CABLE)

Part No.	Part Name
111 821	Extension cable, 10 m, M8 male-female, black, 6-pin
109 841	Extension cable, 3 m, M8 male-female, blue, 6-pin

Diameter Ø 4.2 mm
Material PVC
Wires AWG26
Plug 2 × M8, 6-pin, black (111 821) or blue (109 841)



EXTENSION CABLE (USE AS SYNCHRONIZATION CABLE)

Part No.	Part Name
114 654	Extension cable, 1 m, M8, male-female, 4-pin
104 195	Extension cable, 3 m, M8, male-female, black, 4-pin
114 655	Extension cable, 5 m, M8, male-female, 4-pin
106 169	Extension cable, 10 m, M8, male-female, black, 4-pin
111 125	Extension cable, 30 m, M8, male-female, 4-pin

Diameter Ø 3.4 mm
Material PVC
Wires AWG26
Plug M8, 4-pin, black

GridScan/Mini

Accessories

POWER SUPPLY



SAFETY UNIT FSS

Part No.	Part Name
114 685	Safety unit FSS 230 VAC
114 741	Safety Unit FSS 24 VDC
116 469	Safety Unit FSS SR 230 VAC

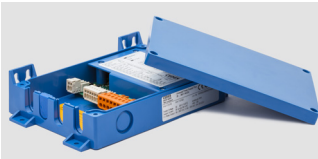
Dimensions (w × h × d)	125 × 35 × 75 mm
Input voltage	115 ... 230 VAC or 24 VDC ±20%
Output	Relay
Sensor connection	12 VDC / 150 mA
Signal input	FSS



UNIVERSAL POWER SUPPLY (UPS)

Part No.	Part Name
103 600	UPS 20-265 VAC/DC complete

Dimensions (w × h × d)	200 × 45 × 128 mm
Input voltage	20 ... 265 VAC / 20 ... 375 VDC
Output	Relay
Sensor connection	24 VDC / 300 mA
Signal input	NPN or PNP input



UNIVERSAL POWER SUPPLY PLUS (UPS PLUS)

Part No.	Part Name
113 520	UPS Plus 20-265 VAC/DC, packed

Dimensions (w × h × d)	200 × 45 × 128 mm
Input voltage	20 ... 265 VAC / 20 ... 375 VDC
Output	2 × Relay
Sensor connection	24 VDC / 300 mA
Signal input	NPN or PNP input



POWER LINE CONVERTER

Part No.	Part Name
106 666	Power Line Converter, 85 ... 265 VAC

Dimensions (w × h × d)	94.4 × 32.7 × 71.5 mm
Input voltage	85 ... 265 VAC / 24 VDC
Output	Relay
Sensor connection	24 VDC / 250 mA
Signal input	NPN or PNP input



RELAY MODULE

Part No.	Part Name
103 602	Relay Module

Dimensions (w × h × d)	53.5 × 27 × 65.5 mm
Input voltage	20.4 ... 27.6 VDC
Output	Relay
Sensor connection	24 VDC / 250 mA
Signal input	NPN or PNP input