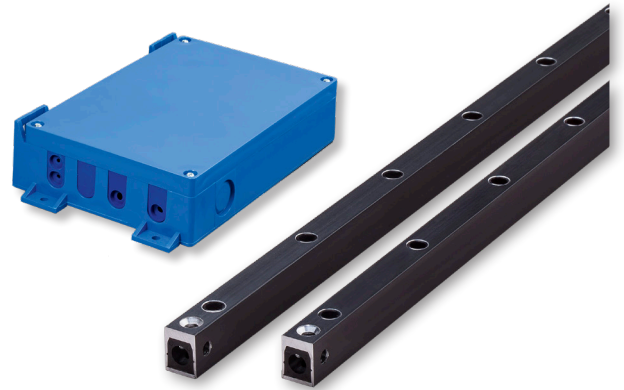


# cegard/Mini-MOD

## Technical data

### FEATURES

- ▶ Power supply voltage of 20 ... 265 VAC or 20 ... 375 VDC
- ▶ Relay output for easy integration into existing systems
- ▶ Wide range of 0 ... 5 m
- ▶ cegard/Mini-MOD with 36 elements fulfills EN 81-20
- ▶ Ideal for retrofitting using different optimized door mounting kits
- ▶ Status LED integrated into edge
- ▶ IP65 (Standard) and IP67 (waterproof) versions available
- ▶ Edge can be front or side mounted – mounting holes are compatible with the MiniMax and cegard/Max light curtains



### OPTICAL

Operating range	0 ... 5 m	
No. of optical elements	16 / 24 / 32 / 36	
No. of beams	16 elements	74 beams
	24 elements	114 beams
	32 elements	154 beams
	36 elements	174 beams remain active to complete door closure
Max. ambient light	100,000 Lux	

### MECHANICAL

Dimensions (w × h × l)	12 × 16 × max. 2,000 mm	
Housing material	Natural or black anodized aluminum	
Enclosure rating		
- Opto edges	IP65 / (IP67)	
- Control unit	IP54	
Temperature range	-20°C ... +60°C	

### ELECTRICAL

Supply voltage $U_{sp}$	20 ... 265 VAC / 20 ... 375 VDC	
Max. current consumption	80 mA at 24 VDC	
	45 mA at 240 VAC	
Relay output	Max. 250 VAC / 5 A	
	Max. 125 VDC / 0.5 A	
	Max. 30 VDC / 5 A	
	Min. 5 VDC / 10 mA	
Typ. response time with	16 elements	80 ms
	20 elements	105 ms
	32 elements	130 ms
	36 elements	130 ms

### GENERAL

EMC emission	EN 12015:2014
EMC immunity	EN 12016:2013
Vibration	IEC 60068-2-6:2007
Shock	IEC 60068-2-27:2008
Cable durability	IEC 60227-2:2003
RoHS	2011/65/EU
Certificates	CE, CSA

### CONNECTION CABLE

#### Emitter

Cable length	5 m
Diameter	Ø 3.5 mm
Material	PVC, black
Connection	M8, 4-pin
Plug color	White

#### Receiver

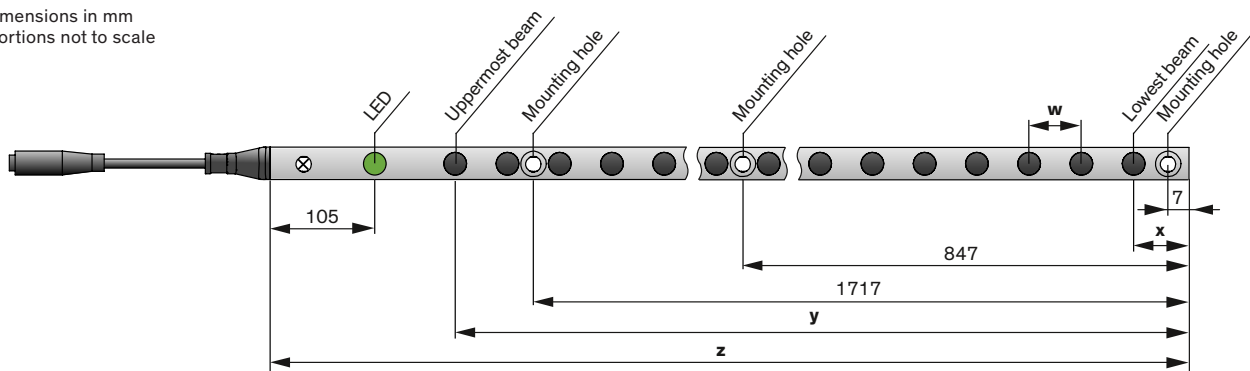
Cable length	5 m
Diameter	Ø 3.5 mm
Material	PVC, black
Connection	M8, 4-pin
Plug color	Blue



CEDES AG is certified according to ISO 9001: 2015.

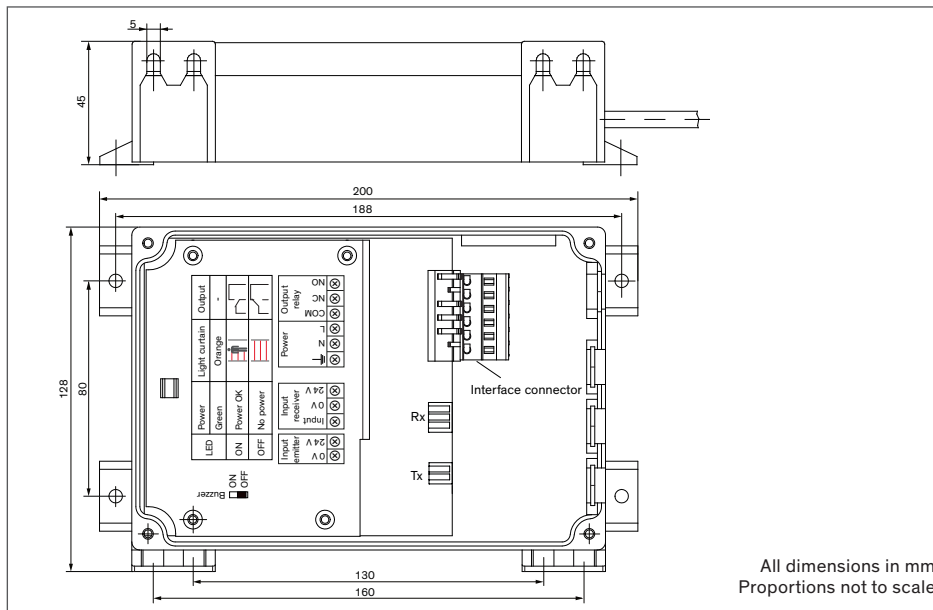
## Dimensions edges

All dimensions in mm  
 Proportions not to scale



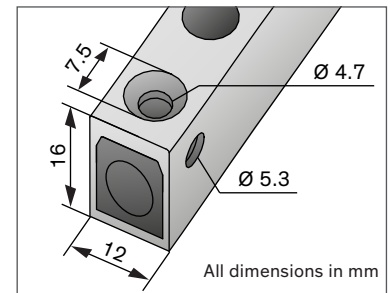
	16 elements	24 elements	32 elements	36 elements	36 elements
<b>w</b>	120	70	57.4	45.1	45.1
<b>x</b>	22	20	20	20	20
<b>y</b>	1822	1630	1800	1600	1600
<b>z</b>	2000	1900	2000	1900	2000

## Dimensions control unit



All dimensions in mm  
 Proportions not to scale

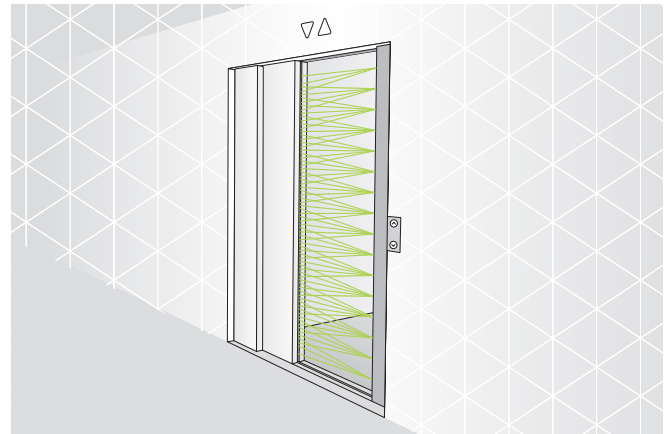
## Detailed view



## Applications



Dynamic mounting



Static mounting